

nSight Supply Chain Analytics

A Next Generation Cloud Based Tool That Transforms Supply Chain Decision-Making.



Definition

nVision Global's cloud-based Impact TMS helps companies manage their global supply chain from anywhere in the world. Impact TMS enables clients to have real-time visibility and management of their shipments which allows their team to focus on their core competencies.

nVision Global's TMS has three core modules which together provide a comprehensive solution. These are:

- Purchase order management
- Shipment execution
- Visibility and analytics

We realize that analytics is a key differentiator in today's competitive marketplace, and our TMS is geared towards providing clients with the best business intelligence possible. We capture, enrich and normalize data from every single invoice to provide insights that can transform decision-making.

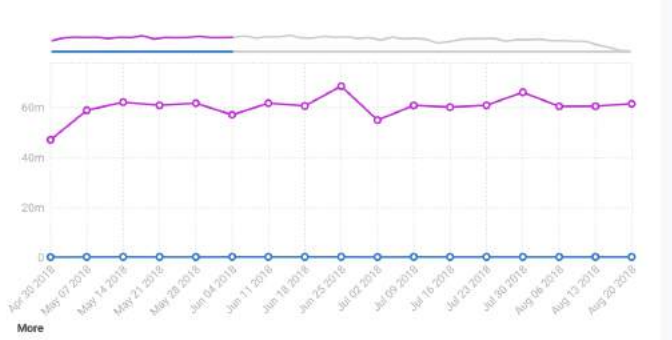
With nSight, our supply chain analytics tool, clients get access to over 1000 KPIs, multiple report formats, mapping capabilities, and export options. Our clients can see the data they want in the format that suits them; allowing for more informed decision-making. This results in better cost control, increased efficiency, and razor-sharp visibility.

Here's a peek into what makes nSight so impactful.

Spend and Invoice Volume

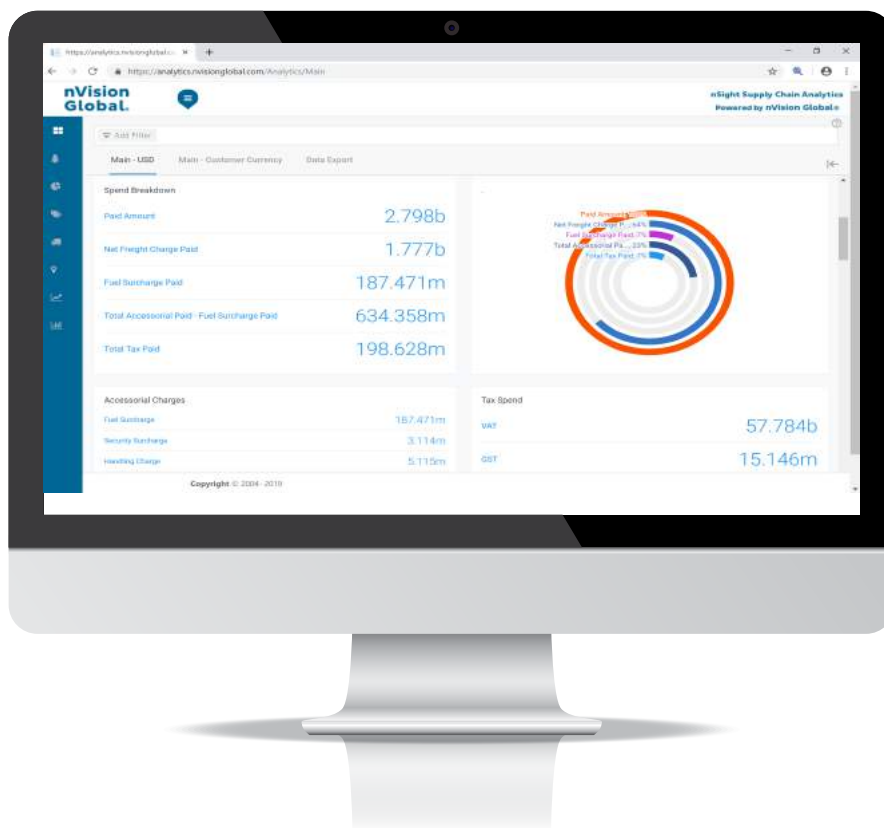
Ship Date	Paid Amount Total	Invoices Count
Apr 30 2018	47.075m	234.301k
May 07 2018	58.88m	285.462k
May 14 2018	62.112m	314.181k
May 21 2018	60.884m	299.681k
May 28 2018	61.71m	266.301k
Jun 04 2018	57.081m	316.508k
Jun 11 2018	61.722m	314.774k
Jun 18 2018	60.636m	313.454k

Columns CSV 52 Results



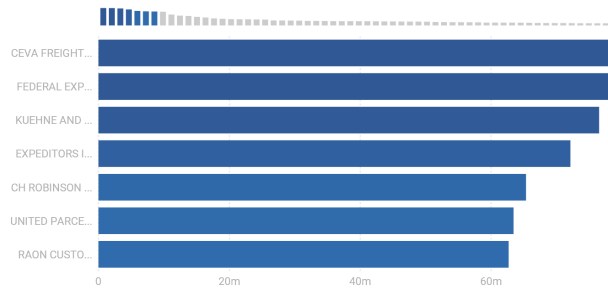
Data visible by time-period

To begin with, this tool allows you to see all the data about your shipments for the time period that you want. In the image below, you can see the option to choose the timeline on the right-hand side. In other words, you can see the shipment data per week, per month, per quarter, per year or over several years. You can even see the entire data to date. This allows you to compare data across time periods and identify patterns accordingly.



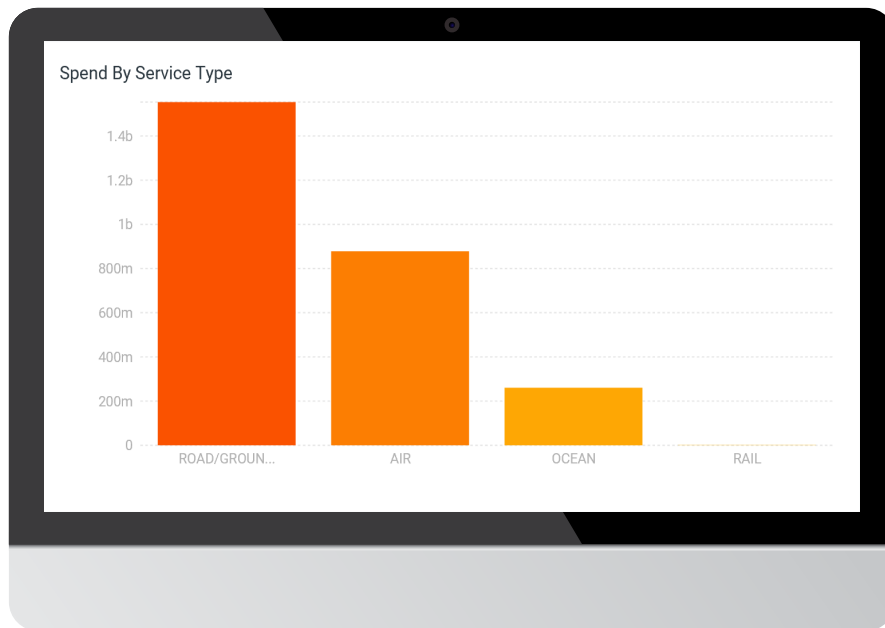
Spend By Transportation Provider

Transportation Provider	Paid Amount	Percentage	Total
CEVA FREIGHT MANAGEMENT	78.413m	2.8 %	33.1
FEDERAL EXPRESS UNITED STA...	78.286m	2.8 %	63.54
KUEHNE AND NAGEL INTERNAT...	76.518m	2.73 %	30.38
EXPEDITORS INTERNATIONAL U...	72.12m	2.58 %	32.59
CH ROBINSON COMPANY INC	65.343m	2.34 %	51.54
UNITED PARCEL SERVICE UNITE...	63.445m	2.27 %	46.57
RAON CUSTOMS CORPORATION	62.681m	2.24 %	0.007

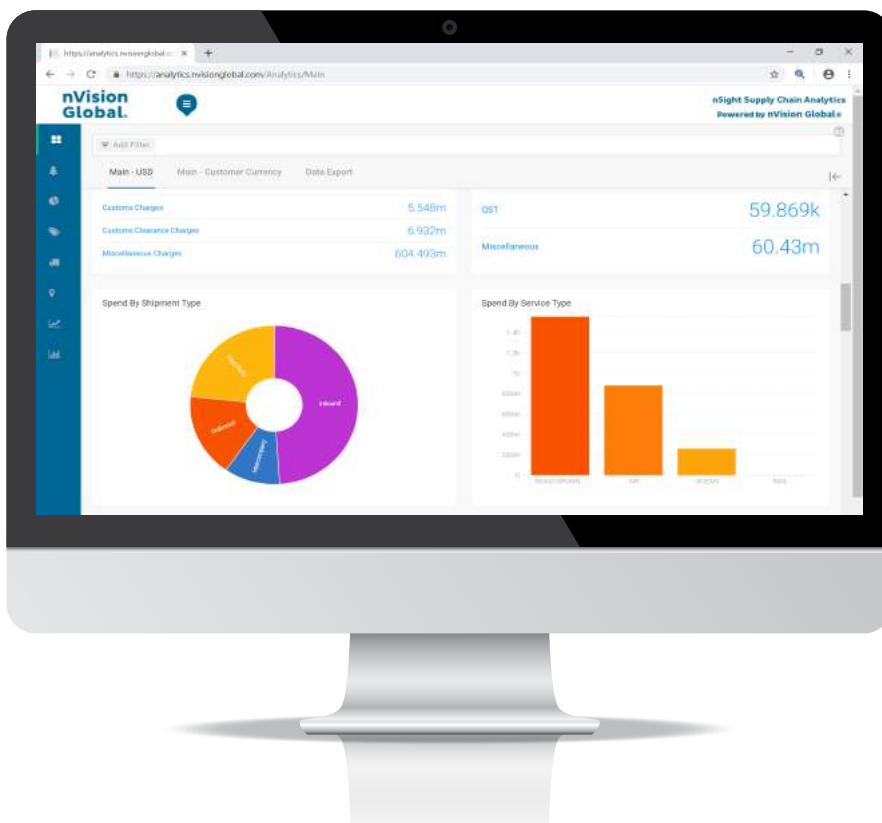
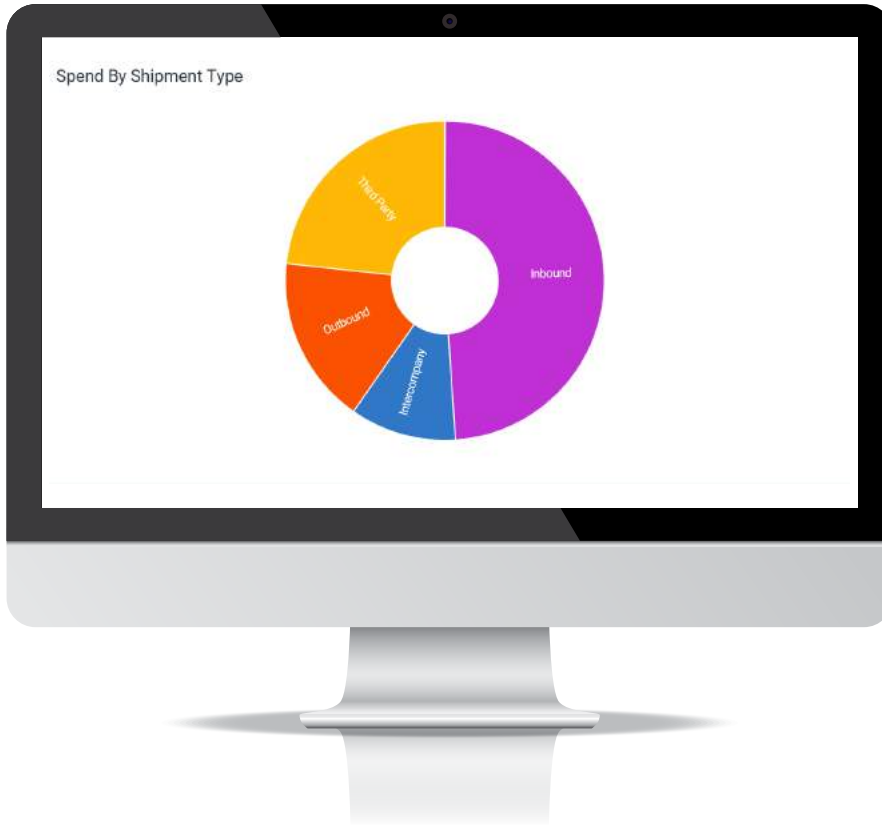


nSight on spending

The chart below is one of the many ways nSight Analytics provides graphical depictions of your transportation spend. Other KPI's available include freight and fuel spend, taxes paid, accessorial charges paid and these include other attributes such as shipping/receiving location information, and other details of the actual shipment. nSight Supply Chain Analytics provides you with a comprehensive picture of your company's global freight spend. Additionally, you can view and export these KPIs in nearly any global currency.

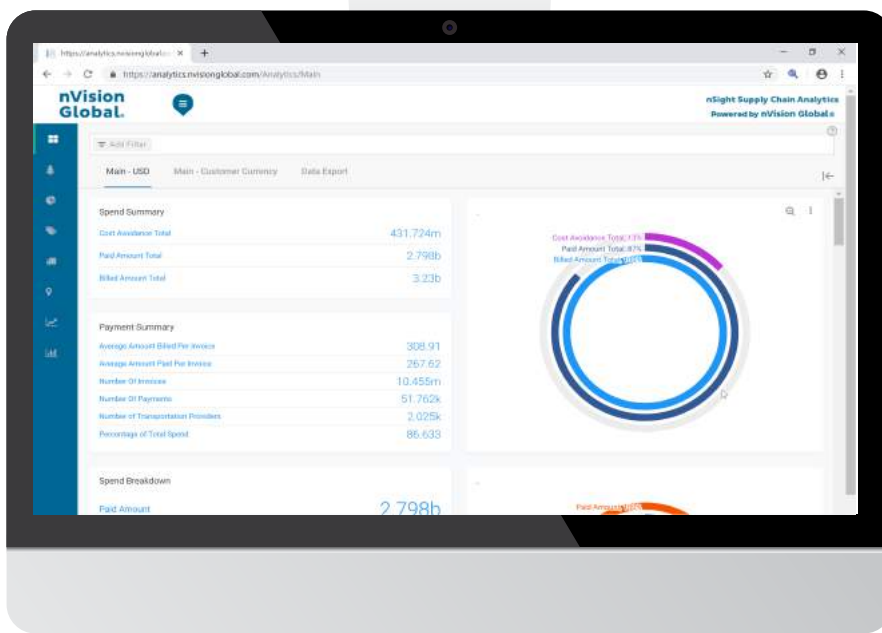
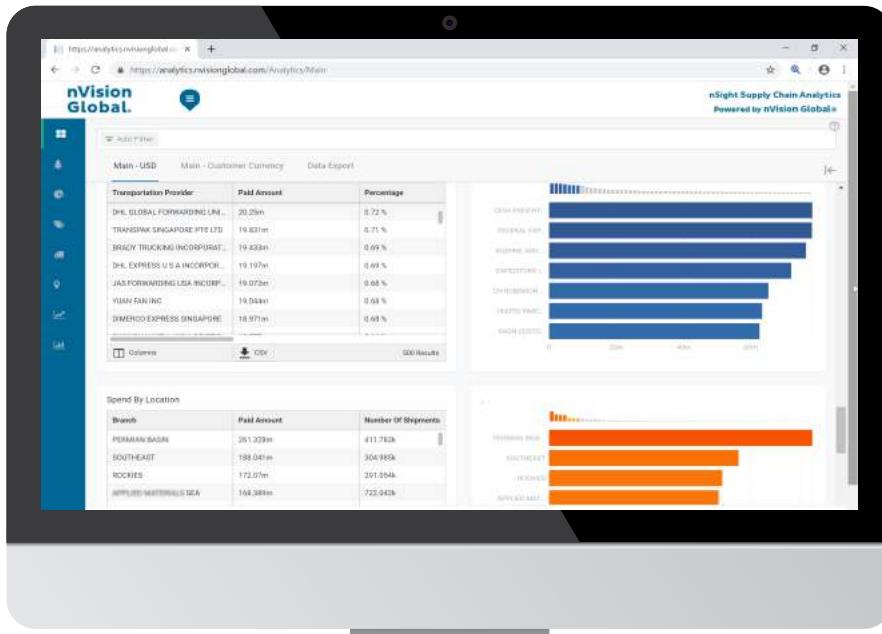


nSight provides customers with the ability to view shipment details pertaining to different modes of transport such as road/ground, air, ocean, rail or small parcel shipments. You can analyze all of your data including Cost per Pound or Kilogram, Billed and Paid Amounts, as well as Average Shipment Cost, all grouped by the mode of transport.

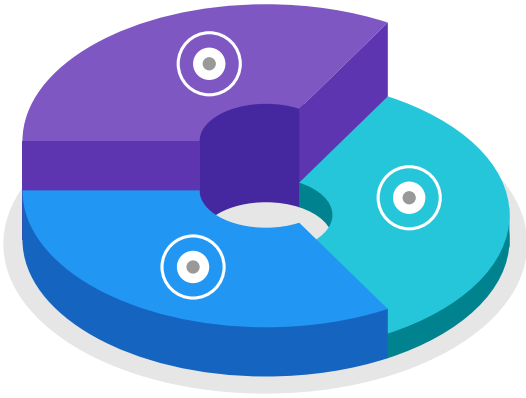


Clients can also measure freight spend by specific transportation provider. nSight allows you to manage multiple currencies so you can compare costs without regards to your transportation providers' specific locations across the globe.

nSight allows you to manage the currency in which your information is displayed. Customers have the ability to see freight spend displayed in U.S. Dollars, a default customer currency or in the billed currency.

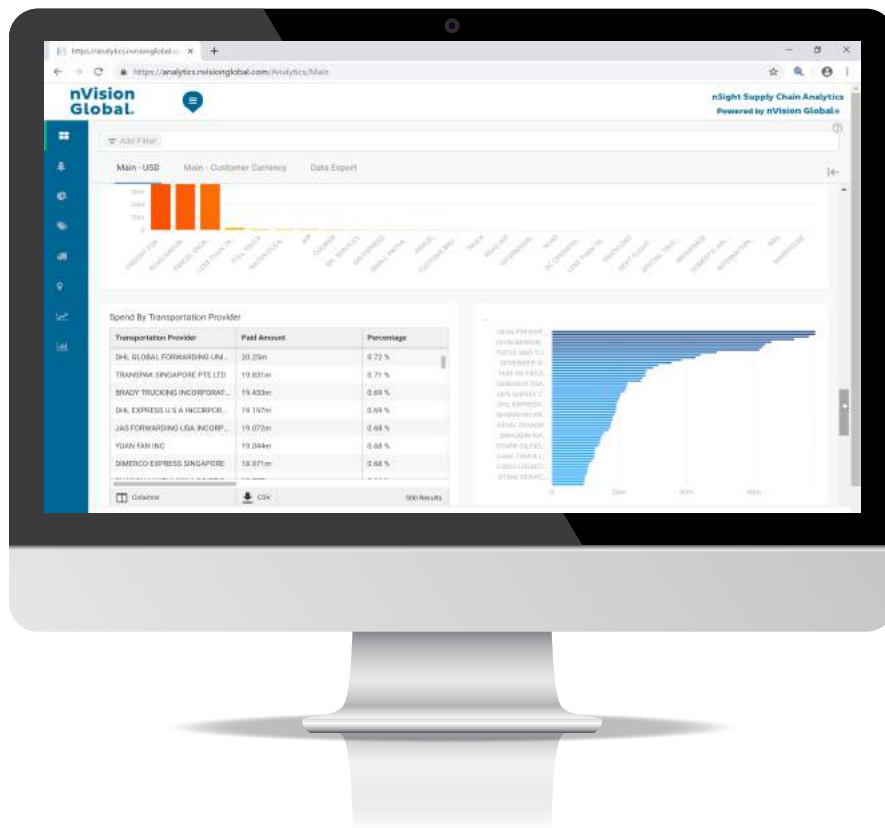


Finally, you can also view transportation cost per kg or lb and compare each provider.



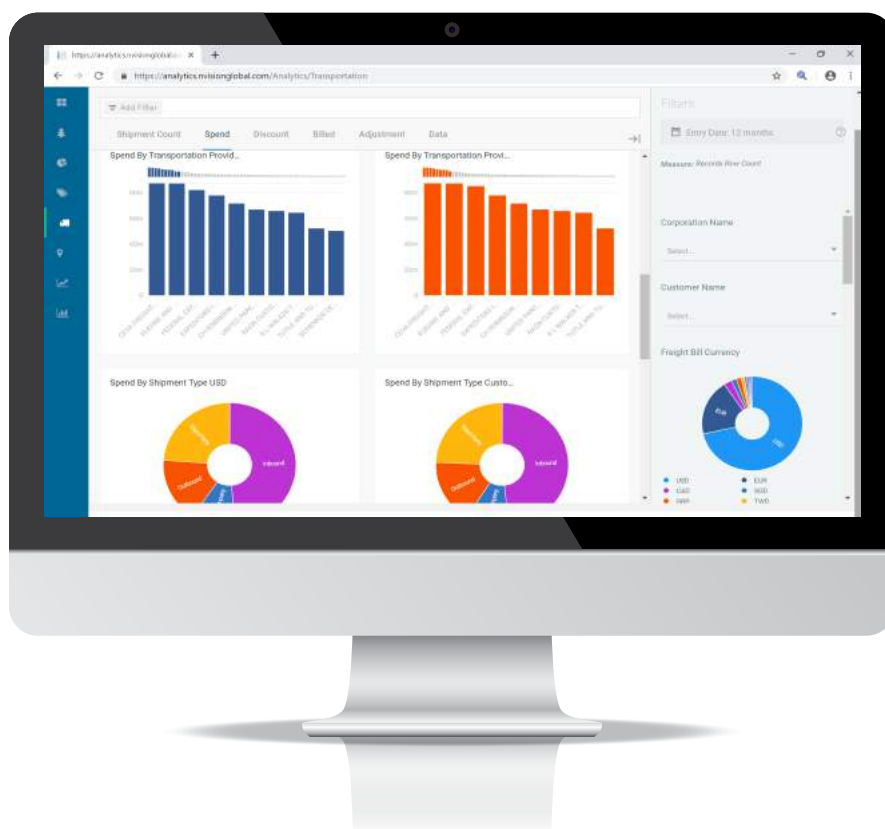
nSight on performance

Another key aspect of nSight analytics is that it allows you to focus on how different carriers are performing. This can help you make objective decisions that drive efficiency. You can measure not just the performance of different carriers but also their performance with respect to each branch.

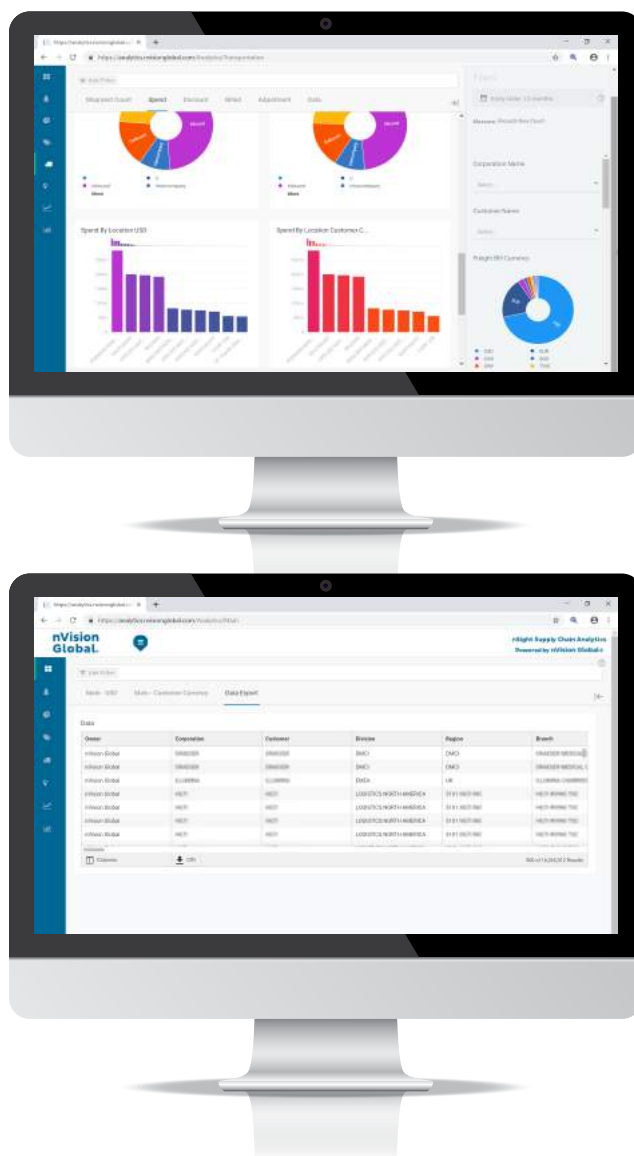


Data export capabilities

A critical feature of nSight is that it allows you to export actionable data in formats that lend themselves to easy analysis. You can download hundreds of thousands of records in a matter of seconds into a CSV or Excel sheet.



nSight gives you a 360-degree view of your shipments from arrival to pick-up and final delivery. The comprehensive analytics on both cost and performance will give you just the information you need to make critical supply chain decisions.



Contact us Today to Learn More About nVision Global's Solutions!

Asia +86-181-6723-8979 / +6-016-770-4327 | Europe (EMEA) +3-143-799-9088

Central America +506-2271-5613 | North America +1-770-474-4122

South America +55 15 98112 8314

- Atlanta, GA (USA)
- San Jose, Costa Rica
- Maastricht, Netherlands
- Cluj, Romania
- Sao Paulo, Brazil
- Kolkata, India
- Delhi, India
- Ningbo, China

sales@nvisionglobal.com www.nvisionglobal.com